

Scale Factor Interface Setup



- SPECIFIC SCALE FACTOR SETTINGS FOR YOUR MACHINE ARE PRINTED ON THE OUTSIDE OF THE SETUP ENVELOPE -

STEP 1: Start Techno CNC Interface.

STEP 2: From the Main Menu click on the Setup button.

NOTE: See the circled section in Figure 1.

STEP 3: Click on System in the Setup screen's menu list.

NOTE: The Setup/System screen will appear. See Figure 2.

STEP 4: Input the numbers printed on a clear Techno label on the front leg of your Techno Router) into the designated M1, M2 and M3 fields of the Setup/System screen.

NOTE: See the circled section in Figure 2. Make sure to type the numbers exactly how they appear on the envelope including any negative values (i.e. -20320).

STEP 5: Click the OK button in the Setup/System screen to save the changes made.

Figure 1

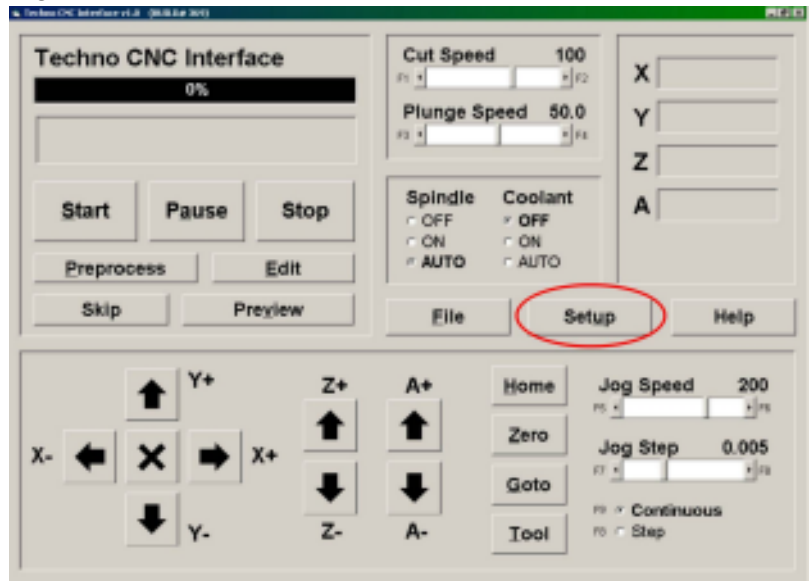
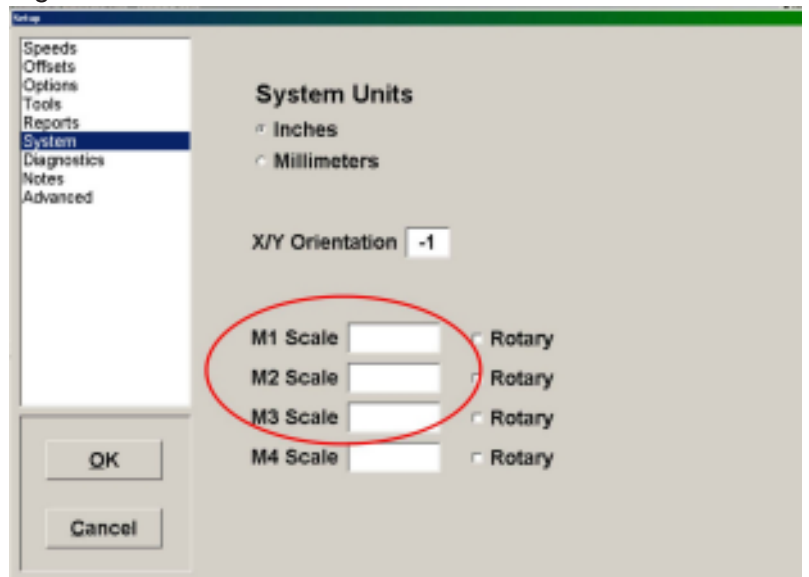


Figure 2



IF THE VALUES ARE NOT WRITTEN ON THE OUTSIDE OF THE SETUP ENVELOPE OR ON THE FRONT RIGHT LEG OF YOUR TECHNO ROUTER THEN THE INTERFACE DEFAULT VALUES SHOULD APPLY.