

# How To Use the Techno Touchpad - Tutorial



In this Tutorial we walk you through the important task of zeroing a tool (bit) on a workpiece. The Techno touchpad helps automate and calculate this process for you.

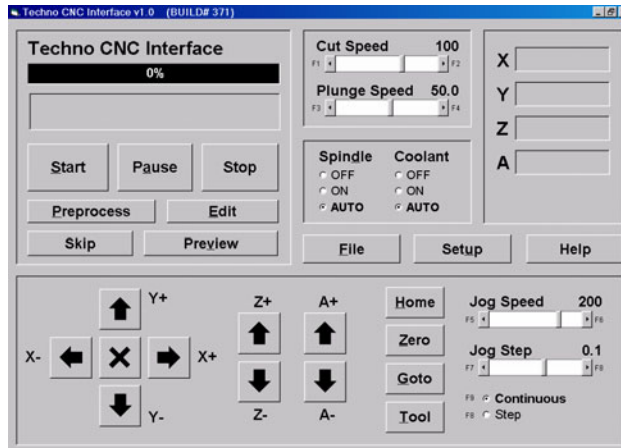
**NOTE:** A tool bit must be loaded in the spindle and the touchpad connected for this tutorial.

## 1. START THE INTERFACE

- A. From your computer's **Start** menu, choose **Programs/Techno CNC Interface**.



The Techno CNC Interface **Main Menu** appears:

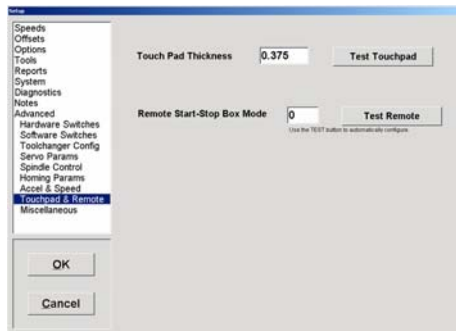


## 2. TEST TOUCHPAD

The following is designed to make sure the touchpad is functioning and to confirm to the GCODE program that the touchpad is installed.

- A. Press **Setup**

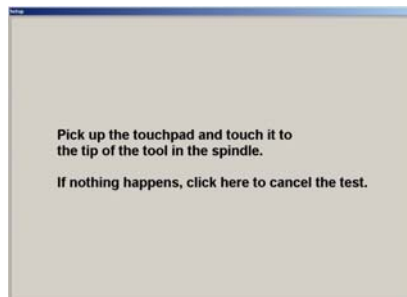
The **Setup** Window appears:



- B. Navigate through the different bookmarked submenus by clicking on the names in the left-side display screen. Click on **Advanced**, then **Touchpad & Remote**.

- A. Press **Test Touchpad**

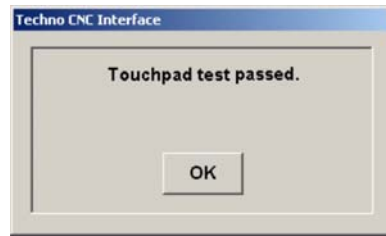
This message should appear:



- H. Follow the directions: *Pick up the touchpad and touch it to the tip of the tool in the spindle. If nothing happens click where it reads **click here** to cancel the test.*



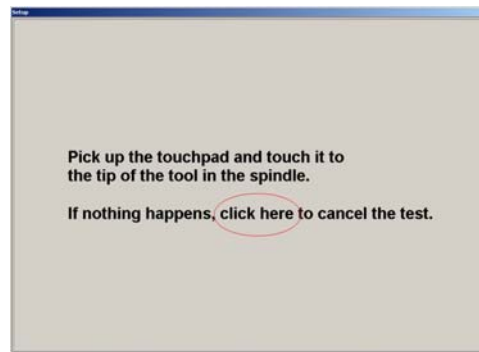
If the touchpad is working the “test passed” screen appears:



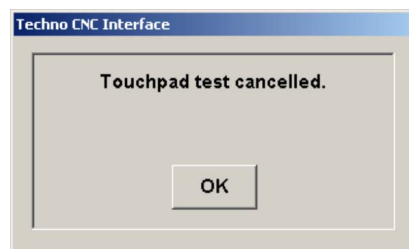
Press  , the test has indicated that the touchpad is functioning properly.

Press  in **Setup** to exit and return the **Main Menu** (skip to **Step 3**).

If the test failed (*nothing happened*), you need to click where indicated (*click here*).



After clicking to cancel, the “test cancelled” screen should appear:



N. Press  in **Setup** to exit and return the **Main Menu**.

If this test “passes” continue on to the next step. If this test had to be “cancelled” then further troubleshooting is required. Turn the power off, check the connections and call Techno for assistance at 95160 328-3970 or e-mail us at support@technocnc.com.

**WARNING:** Only proceed to **Step 3** if the touchpad test was successful (it “passed”).

### 3. ZERO THE Z-AXIS

- A. From the **Main Menu**, press .

The **Tool Menu** appears:




**NOTE:** Make sure that the tool bit is located directly above the touchpad (about 4 or 5 inches). Although, this is just a Tutorial, in the future it is likely you will be setting the top portion of your workpiece as the Z-axis zero. So, if you want to place the touchpad on top of some cutting material for this portion of the Tutorial, do so now.

- B. Press .

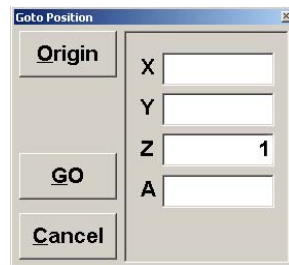
The Z-axis begins its descent, once it contacts the touchpad, it will retract back up, having already set the Z-axis Zero position. Check the **Jog/Position Display** counters on the **Main Menu**.

#### 4. TEST THE NEW Z-AXIS ZERO USING GOTO

In this step we program the Z-axis to travel 1-inch above the zero we just set in **Step 3**.

- A. Press .

The **Goto Pop-up Window** appears:



- B. Type "1" into the Z input box, then press .

Watch how the Z-axis automatically travels to exactly 1-inch above the Z-axis zero.

**NOTE:** If you want the Z-axis to travel to the zero, simply type "0" instead of 1 in **Step 4B**.

***Continue to the next page for LC Board / Touchpad Connection Options.***

# Touchpad Connections For LC Control Board

	No 4th Axis Present	4th Axis Present
LC SERIES	Touchpad Connector to <b>P4 / Encoder 4</b>	Touchpad Connector to Riser Card. Riser Card connected, via ribbon cable, to <b>JP4 I/O Connector</b> .

*For LC Plus, RG and Premium Class machines the touchpad gets connected to the Techno I/O Riser Card. The Riser card is ribbon-cabled to the Techno PCI Controller Card, which is installed inside the computer.*

