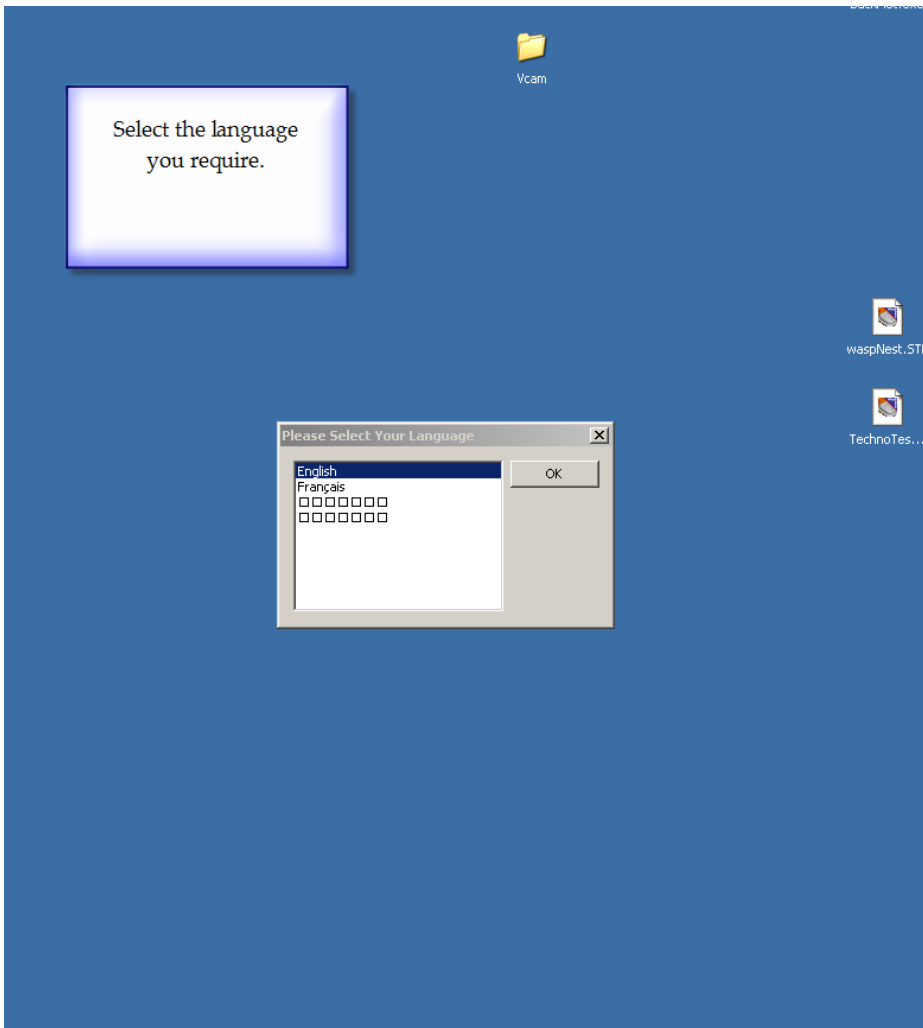


TECHNO CNC VISION SYSTEM

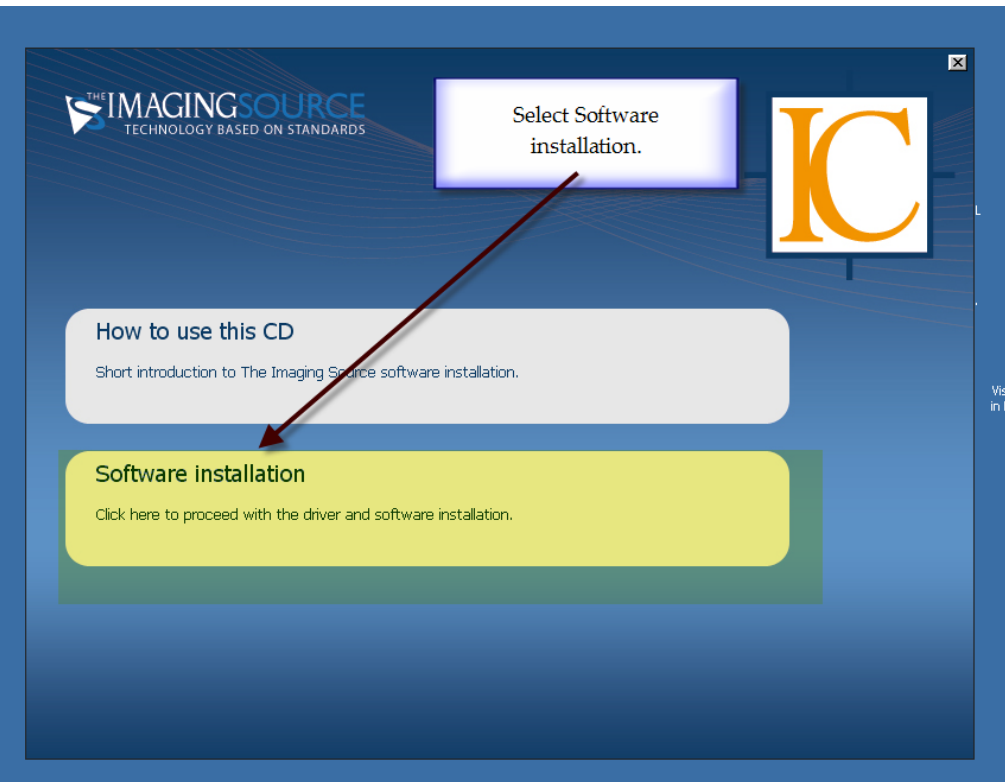
This document details how to install the Camera Drivers and Library of IC camera.

These instructions need to be followed before the Techno Vision software is installed.

It is assumed that the camera is connected to the computer through a functioning firewire connection.



Step 1.



Step 2.



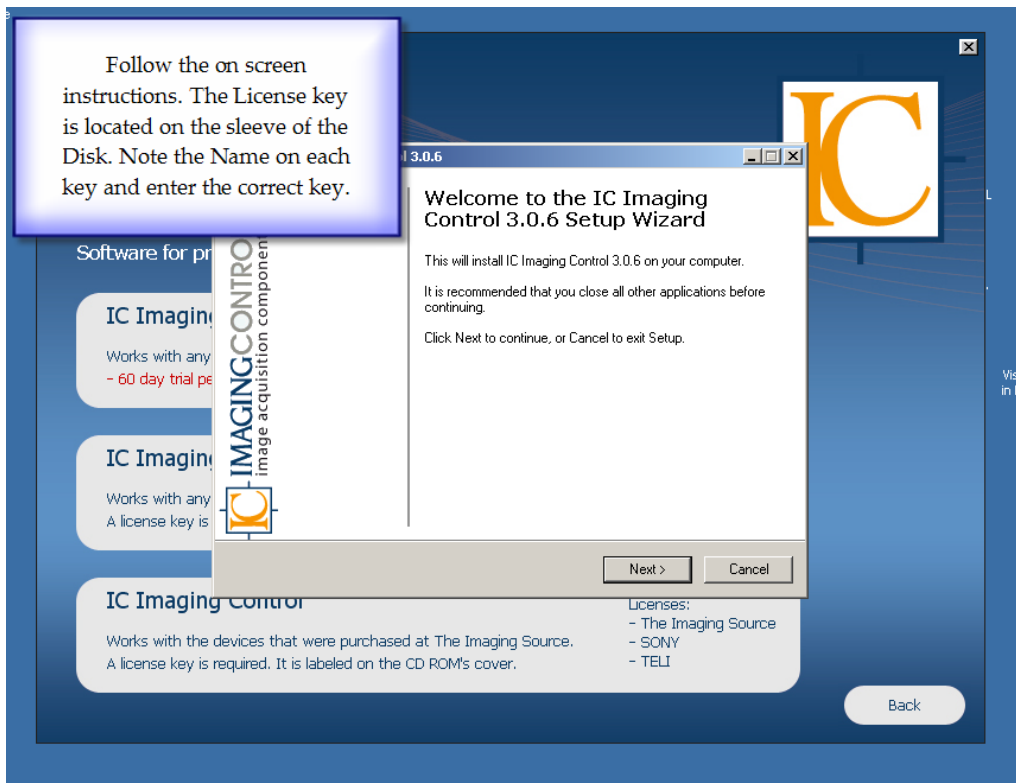
Step 3.



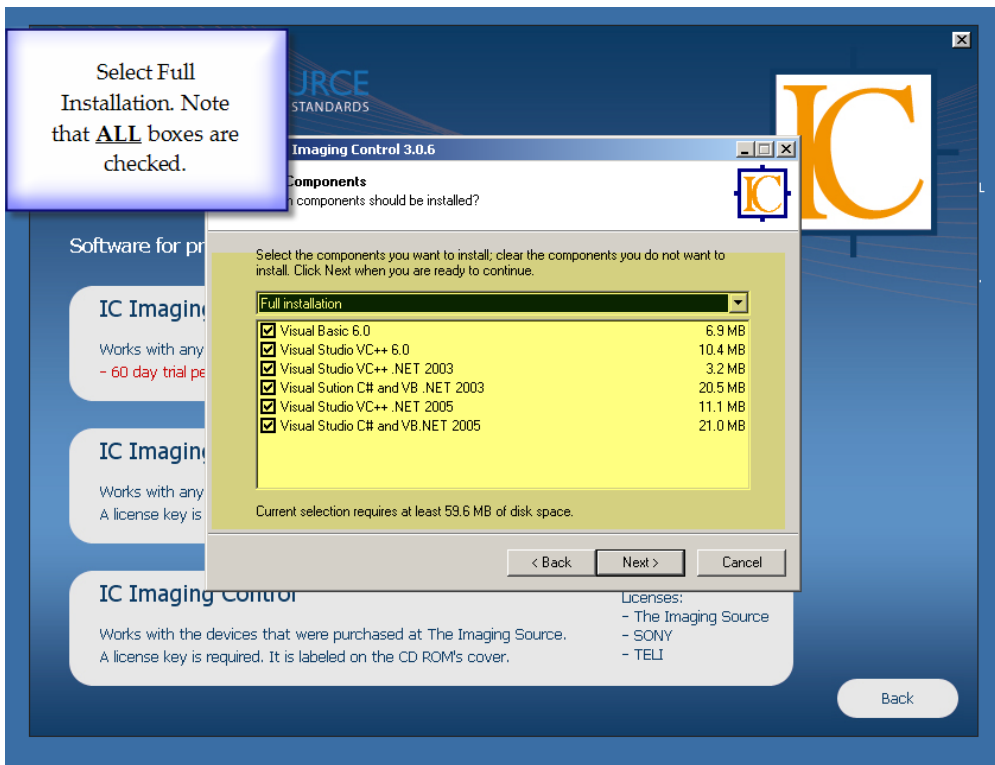
Step 4.



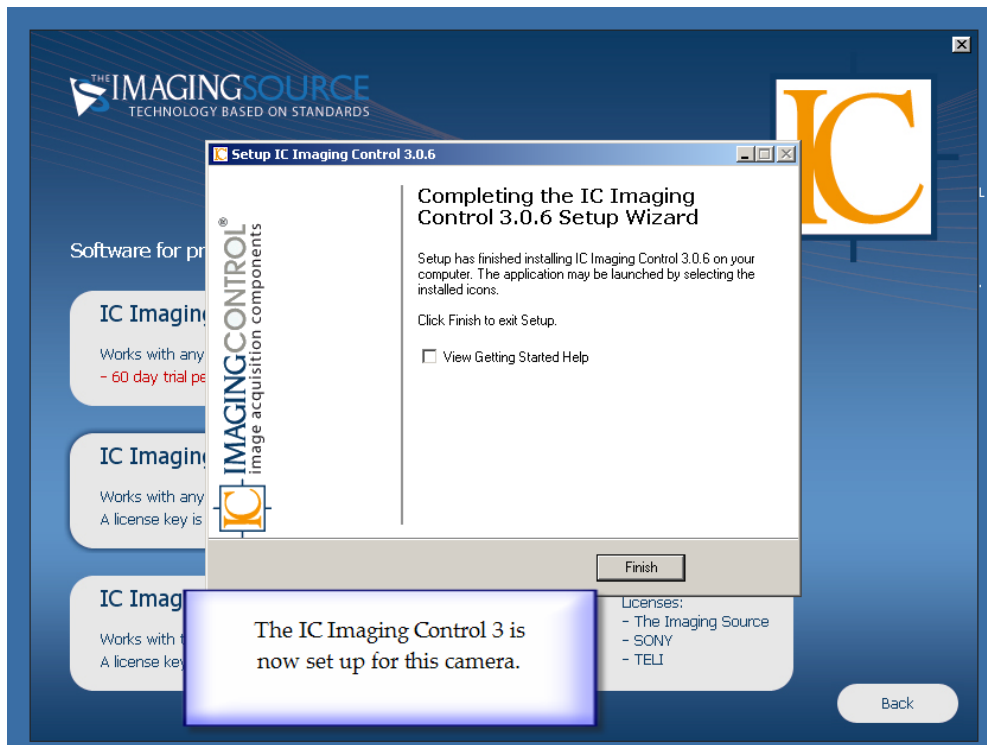
Step 5.



Step 6.



Step 7.



Step 8.



Step 9.



Step 10.



Step 11.



Step 12.

The screenshot shows a 'Driver Installation Wizard' window. The title bar reads 'Driver Installation Wizard'. The main window has a header 'IC WDM DCAM' and a large 'IC' logo on the right. The text inside says 'Welcome to the Driver Installation Wizard!' and 'Please select the devices you want to update and click 'Next' to continue.' Below this, there is a list of devices with a single entry: 'imaging source dmx 21af04', which is checked and highlighted in yellow. A red arrow points to this entry. At the bottom of the wizard are buttons for '< Back', 'Next >', and 'Cancel'. On the left side of the wizard, there is an image of a camera and the website 'www.theimagingsource.com'. The background of the slide features a blue gradient with a 'Back' button in the bottom right corner.

Select the camera connected to the PC. If no device is present check the connection between the PC and the camera.

Step 13.

The screenshot shows the 'Driver Installation Wizard' window at the 'Installation completed' stage. The title bar reads 'Driver Installation Wizard'. The main window has a header 'IC WDM DCAM' and a large 'IC' logo on the right. The text inside says 'Installation completed' and 'Click on 'Finish' to close this window'. At the bottom of the wizard are buttons for '< Back', 'Finish', and 'Cancel'. On the left side of the wizard, there is an image of a camera and the website 'www.theimagingsource.com'. The background of the slide features a blue gradient with a 'Back' button in the bottom right corner.

The Camera drivers are now installed. Note: If the camera is replaced you will need to re-install the drivers.

Step 14.